



# MONTHLY MEMBERSHIP PROGRESS REPORT

District 45

Results as of: 09/30/2017

GMT: MAHESH CHITNIS

LOCATION VERMONT

GMT CA

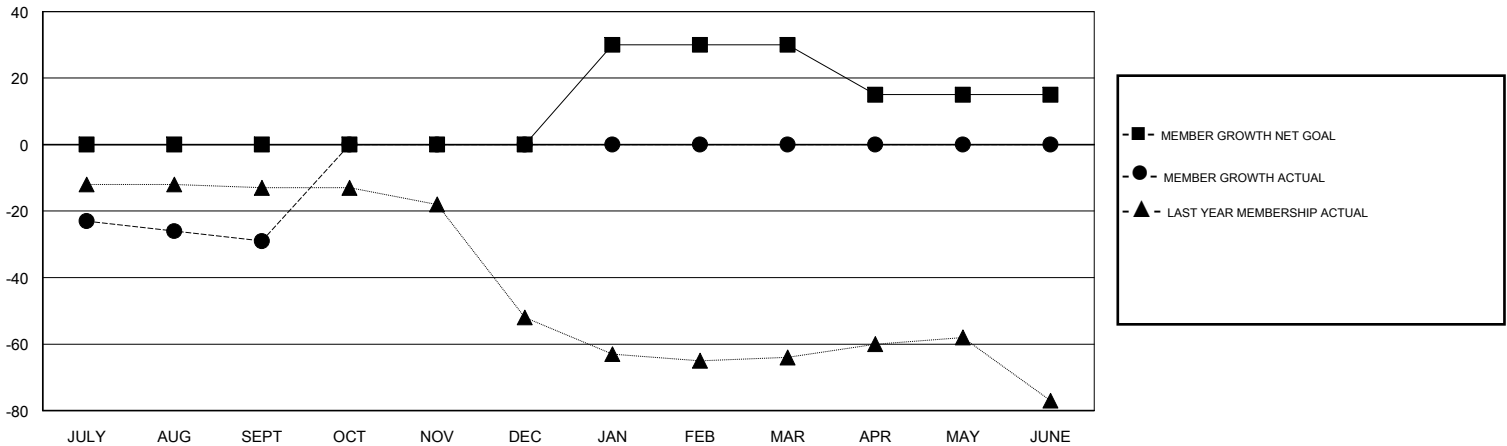
Clubs			
RESULTS FOR 2017-2018			
QUARTER	NEW CLUB GOAL	NEW CLUBS	DROPPED CLUBS
JULY/AUG/SEPT	0	0	1
OCT/NOV/DEC	0	0	0
JAN/FEB/MAR	1	0	0
APR/MAY/JUNE	0	0	0

Members			
RESULTS FOR 2017-2018			
QUARTER	MEMBER GROWTH NET GOAL	MEMBER GROWTH ACTUAL	DROPPED MEMBERS ACTUAL (including transfers)
JULY/AUG/SEPT	0	12	41
OCT/NOV/DEC	0	0	0
JAN/FEB/MAR	30	0	0
APR/MAY/JUNE	-15	0	0

GOALS AND ACTUAL NEW CLUBS CUMULATIVE



GOALS AND ACTUAL MEMBERS CUMULATIVE



DROPPED CLUBS: 1	6 CLUBS OF 35 ADDED 1 OR MORE NEW MEMBERS	<b>GENDER DISTRIBUTION</b> MALE 720 (65.40%) FEMALE 381 (34.60%) Women Percentage Fiscal Year Goal: 40%
<b>DROPPED MEMBERS</b> DECEASED 3 CLUB CANCELLED 0 OTHER 38 TOTAL 41	<a href="#">CLICK HERE FOR CUMULATIVE MEMBERSHIP DATA</a>	TOTAL FAMILY UNIT MEMBERS 241 FAMILY MEMBERS PAYING HALF DUES 124